

REVISIONS			
CHG	DESCRIPTION	BY	CHKD/DATE

# Weld Cleaning Brushes

Specially Designed for Pipe Line Construction Fabrication



## Maryland Brush Company

REFERENCE  
SEE DANIELI  
WEAR - LUGS  
DINO # A-1098

QTY	DESCRIPTION	UNIT	PRICE	TOTAL
5	1/2" x 3/8"	STL.	1	5
4	2" x 1/8"	4150-L	1	4
3	1 1/2" THK	4150-L	1	3
	4 DIA. X 125" LG.	4150-L	1	
	5 DIA. X 1/4 THK	4150-L	1	

FACE COLLAR

SK-484

# Stringer Bead, Cable and Standard Twist Knot Type Wire Wheels for Hand Tools

## Typical Uses:

Stringer Bead  
Weld Cleaning

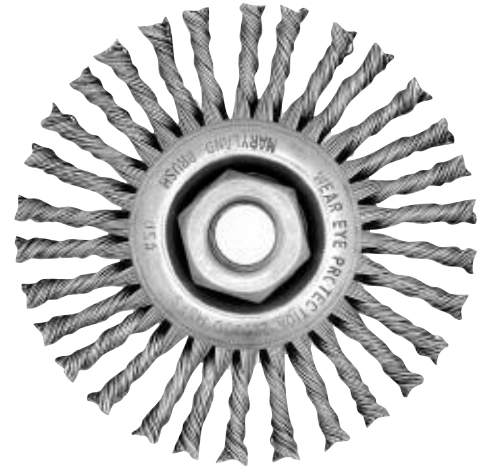
Removing Heavy  
Encrustation in  
Concentrated  
or Confined  
Areas

Burr Removal  
from Gears

Casting Forms  
Cleaning

Used Without  
Power, to  
Clean Chain  
Type Conveyor  
Belts

Stringer Bead Twist (Narrow Face) Knot Type Wire Wheels feature our most aggressive and stable narrow face, full length cable twist, positive wrap-around hold on knot position, and generally offer more knot selections for each wheel size than Cable Twist or Standard Twist, Knot Type Wire Wheel brushes.



Carbon	Stainless	Dia.	Wire Size	Face Width	Trim Length	Knots	Arbor Hole	MSFS R.P.M.
43102	43112	4"	.020"	3/16"	1"	32	5/8"-11 Thd	20,000
43107	43150	4"	.020"	3/8"	1"	20	5/8"-11 Thd	20,000
42170	42270	6"	.023"	3/8"	1-1/4"	24	5/8"-11 Thd	12,500
42171	42271	6"	.023"	3/8"	1-1/4"	30	5/8"-11 Thd	12,500
42172	42272	6"	.020"	3/16"	1-1/4"	40	5/8"-11 Thd	12,500
42173	42273	6"	.020"	3/16"	1-1/4"	48	5/8"-11 Thd	12,500
42174	42374	6"	.020"	3/16"	1-1/4"	56	5/8"-11 Thd	12,500
42113		6-7/8"	.020"	3/16"	1-1/8"	56	5/8"-11 Thd	9,000

Capco® Encapsulated Stringer Bead (Narrow Face) Crimped Wire Wheel features our most aggressive crimped wire fully encapsulated in our unique Capco® material. Perfect when control and precision are a must.



Carbon	Dia.	Wire Size	Face Width	Width at Faceplate	Trim Length	Arbor Hole	MSFS R.P.M.
44035	7"	.014"	1/4"	1-1/8"	1-1/8"	5/8"-11 Thd	9,000

## Knot Type Wire Cup Brushes for Machine Mount or Heavy-Duty Angle Grinders



### Typical Uses:

55 Gallon Drum  
Cleaning

Scale and Rust  
Removal

Heavy Duty  
Cleaning and  
Surface  
Preparation

Weld Scale  
Removal

Deburring

High strength steel components are locked together as a unit, eliminating slippage and providing an aggressive and secure positive drive.

### Knot Type Wire Cup Brushes, Single Row

Carbon	Stainless	Dia.	Wire Size	Trim Length	Arbor Hole	MSFS R.P.M.
43090	43190	2-3/4"	.014"	3/4"	5/8"-11 Thd	12,500
43092	43192	2-3/4"	.020"	3/4"	5/8"-11 Thd	12,500
43050		4"	.014"	1-1/4"	5/8"-11 Thd	7,000
43049	43048	4"	.020"	1-1/4"	5/8"-11 Thd	7,000
43022		6"	.014"	1-1/2"	5/8"-11 Thd	6,000
43024	43025	6"	.020"	1-1/2"	5/8"-11 Thd	6,000
	43046	6"	.023"	1-1/2"	5/8"-11 Thd	6,000

## Crimped Wire Cup Brushes for Higher Speed, Small Angle Grinders

### Typical Uses:

Deburring

Surface  
Conditioning

Metal Surface  
Preparation

Rust and Paint  
Removal

Weld Cleaning

Thread Cleaning

Roughening

O.D. and I.D. Pipe  
Cleaning

Hose Skiving

Made with a premium quality wire, are perfectly balanced and lightweight to minimize vibration and operator fatigue.

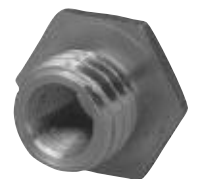


### Crimped Wire Brushes

Carbon	Stainless	Dia.	Wire Size	Trim Length	Arbor Hole	MSFS R.P.M.
43097	43197	2-3/4"	.014"	7/8"	5/8"-11 Thd	12,500
43080		2-3/4"	.020"	7/8"	5/8"-11 Thd	12,500
43004		4"	.014"	1-3/8"	5/8"-11 Thd	9,000
43006	43008	4"	.020"	1-3/8"	5/8"-11 Thd	9,000
43010		6"	.014"	1-1/2"	5/8"-11 Thd	6,000
43012	43016	6"	.020"	1-1/2"	5/8"-11 Thd	6,000

### Threaded Reducers for Crimped Wire and Knot Type Wire Mini-Cup Brushes

Item Number	Converts Arbor Hole from 5/8"-11 Thd to:
46024	3/8"-24 Thd
46022	M10 x 1.25 Thd
46023	M10 x 1.5 Thd



## Stem Mounted, End Brushes for Higher-Speed Hand Tools



### Typical Uses:

- Cleaning Rubber and Plastic Molds
- Cleaning Weld Scale
- Cleaning Castings
- Removing Rust, Paint, Burrs, Rubber Flash and Carbon
- Cleaning and Finishing Recessed Areas

MBC provides a complete range of quality End Brushes for hard-to-get-at jobs.

The self-contained 1/4" diameter shank

makes them readily adaptable to portable air and electric tools or drill presses. The following

charts are for stocked brushes, but other variations of these brushes are

available with different fill materials, trim lengths, modified shapes, bridles,

and SCUFFGUARD® coating which is a protective ferrule coating that prevents

mechanical damage to brushed parts. End Brushes with non-sparking filaments

and SCUFFGUARD® are excellent to minimize spark hazard.

### Solid Face

Carbon	Stainless	Dia.	Wire Size	Trim Length	MSFS R.P.M.
43601	43613	1/2"	.006"	1"	25,000
43602	43614	1/2"	.010"	1"	25,000
43603		1/2"	.014"	1"	25,000
43604		1/2"	.020"	1"	25,000
43605	43615	3/4"	.006"	1"	25,000
43606	43616	3/4"	.010"	1"	25,000
43607	43617	3/4"	.014"	1"	25,000
43608	43592	3/4"	.020"	1"	25,000
43609	43619	1"	.006"	1"	20,000
43610	43620	1"	.010"	1"	20,000
43611	43621	1"	.014"	1"	20,000
43612	43594	1"	.020"	1"	20,000



### Typical Uses:

- Severe Applications of Removal of Heavy Scale, Corrosion, Weld Spatter and Rust Around Protruding Objects

### Knot Type

Carbon	Stainless	Dia.	Wire Size	Trim Length	MSFS R.P.M.
43649	53625	3/4"	.014"	1"	20,000
43641	53626	3/4"	.020"	1"	20,000
43622	53622	1-1/8"	.014"	1"	20,000
43623	53629	1-1/8"	.020"	1"	20,000

## Wire Scratch Brushes

### Curved Long Handle Wire Scratch

The narrow brush part and long wood handle make it preferable for pattern makers' and braziers' finishing work as well as for cleaning architectural iron work, figured brass or small castings. A popular all-purpose brush.



Carbon	Stainless	Rows	Overall Length	Brush Part Length	Trim Length	Wire Size	Scrapper
30157	30167	3 X 19	13-3/4"	5-3/4"	1-3/16"	.012"	No

### Shoe Handle Wire Scratch

A handy brush for getting into corners and small out-of-the-way places. Excellent for brushing pipe threads and battery terminals. Popular wood shoe handle grip.



Carbon	Stainless	Bronze	Rows	Overall Length	Brush Part Length	Trim Length	Wire Size	Scrapper
30161	30168	30169	4 X 16	10"	5"	1-3/16"	***	No

### Toothbrush Scratch

A small toothbrush type scratch.

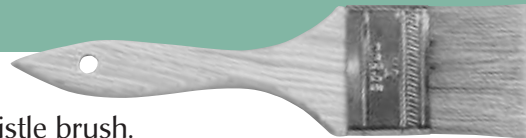


Stainless	Brass	Rows	Overall Length	Brush Part Length	Trim Length	Wire Size	Block Material
30214	30270	3 X 7	7-1/8"	1-3/8"	1/2"	.005"	Contoured Plastic
30271		3 X 7	7-3/4"	1-1/2"	1/2"	.005"	Straight Wood

## Chip Brushes

Inexpensive brushes that fill the need for hundreds of applications. The perfect no-clean disposable brush.

A wooden handled, stapled ferrule, white bristle brush.



Item No.	Size	Thick	Length	Box Qty.
10402	1"	5/16"	1-1/2"	36
10404	2"	5/16"	1-1/2"	24
10406	3"	3/8"	1-1/2"	24
10407	4"	3/8"	1-1/2"	12
10417	4"	5/8"	2"	12

## Acid Swab Tool

Our acid brushes are manufactured with Electrolytic Tin Plate and filled with 100% pure, stiff horsehair for maximum-lasting qualities when used with heat and acids, or other cleaning agents.



Item No.	Size	Bristle Length
10064	3/8"	3/4"
10065	1/2"	13/16"
10066	9/16"	7/8"

# Mini Grinder Thread Reference Chart

Manufacturer	Model Number	Thread Size	Inches	Model Description	RPM	AMPS and/or Horsepower Rating
AEG	WS 601 WS 750	5/8 - 11 UNC 5/8 - 11 UNC	4-1/2 4-1/2	Angle Grinder Lt. Wt. Utility Grinder	10,000 10,000	5.5 AMPS 6/8 AMPS
Air Tools	All American Manufacturers	3/8-24 UNF				
Black & Decker	4247 4246-09 4250-10 6247 4252	5/8 - 11 UNC M10 x 1.50 5/8 - 11 UNC M10 x 1.5 5/8 - 11 UNC	4-1/2 4-1/2 5 4 5	Angle Grinder Angle Grinder Angle Grinder Angle Grinder Angle Grinder	10,000 10,000 10,000 10,000 10,000	6.0 AMPS 5.0 AMPS 8.1 AMPS 5.0 AMPS 10.0 AMPS
Bosch	3255 1337 1338 7351-103	M14 x 2 M14 x 2 M14 x 2 M14 x 2	4-1/2 4-1/2 5 4-1/2	Mini Grinder Mini Grinder Mini Grinder Air Mini Grinder	11,000 11,000 11,000 13,000	400 WATTS 500 WATTS 500 WATTS AIR
Hitachi	G10 G10SA PDP-115A PDS-115A PDM-115 PDM-125	M10 x 1.50 M10 X 1.50 M10 X 1.50 M10 X 1.50 5/8 - 11 UNC 5/8 - 11 UNC	4 4 4-1/2 4-1/2 4-1/2 5		11,000 11,000 11,000 11,000 9,500 9,000	5.0 AMPS 5.0 AMPS 5.0 AMPS 5.0 AMPS 6.4AMPS 6.4 AMPS
Ingersoll Rand	8245	5/8 - 11 UNC		H. D. Angle Grinder	11,000	4.2 AMPS
Jet	490004 490045 490005	M10 x 1.25 5/8 - 11 UNC 5/8 - 11 UNC		JEG 400 JEG 450 JEG 500	11,000 11,500 9,800	4.2 AMPS 6.0 AMPS 6.0 AMPS
Makita	9501 8 Kit M-952 9005 B GA 5000 9505 B	M10 x 1.25 M10 x 1.25 5/8 - 11 UNC 5/8 - 11 UNC 5/8 - 11 UNC	4 4 5 5 5	Sander Grinder Angle Grinder Angle Grinder Angle Grinder Angle Grinder	10,000 10,000 10,000 10,000 8,700	3.5 AMPS 3.5 AMPS 9.4 AMPS 7.8 AMPS 3.5 AMPS
Metabo	AG 550 AG 705 EW-950	M14 x 2 M14 x 2 M14 x 2	4-1/2 5 6	Angle Grinder Angle Grinder Angle Grinder	10,000 10,000 8,500	5.2 AMPS 6.8 AMPS 8.2 AMPS
Milwaukee	6145 6146	1/2-13 UNC 1/2-13 UNC	4-1/2 5	Sander Grinder Sander Grinder	10,000 10,000	5.0 AMPS 5.5 AMPS
Porter Cable	749 8749	M14 x 2 M14 x 2	4-1/2 4-1/2	Grinder Grinder	12,000 12,000	4.2 AMPS 2.1 AMPS
Ryobi	G1150 SG-1150-C	5/8 - 11 UNC 5/8 - 11 UNC	4-1/2 4-1/2	SuperGrinder Angle Grinder	10,000 11,000	4.1 AMPS 4.3 AMPS
Sioux	1240 1245	M10 x 1.50 5/8 - 11 UNC	4-1/2 5	Electric Grinder Angle Grinder	11,000 10,000	5.0 AMPS 6.0 AMPS
Skil	915 9405	M10 x 1.50 M10 x 1.50	4-1/2 4-1/2	Heavy Duty Grinder Angle Grinder	12,500 12,000	4.5 AMPS 4.5 AMPS



## MARYLAND BRUSH COMPANY

3221 Frederick Avenue • Baltimore, Maryland 21229  
410-945-3300 • 800-654-0774 • Fax 410-945-2682

